

SUPER SERIES[®]

Small-Body Rear Loader



"Great machine for getting into tight places."

The smallest, most productive rear loader on the market.

You can go anywhere with the high performance of the Super Series. Get in and out of tight spots and low-clearance areas. Perfect for rural routes, downtown locations, gated communities or wherever bigger, heavier loaders can't tread.

Standard Features:

- strong, curved floor
- high-strength, curved shell body design
- lightweight, high strength-to-weight ratio
- low loading height reduces operator fatigue
- 14-second packing cycle time, 650 lbs./yd. compaction
- automatic locking tailgate for safer use
- CDL and FET exempt, ANSI and CE certified

WAYNE[®]
ENGINEERED FOR PERFORMANCE

www.WayneUSA.com



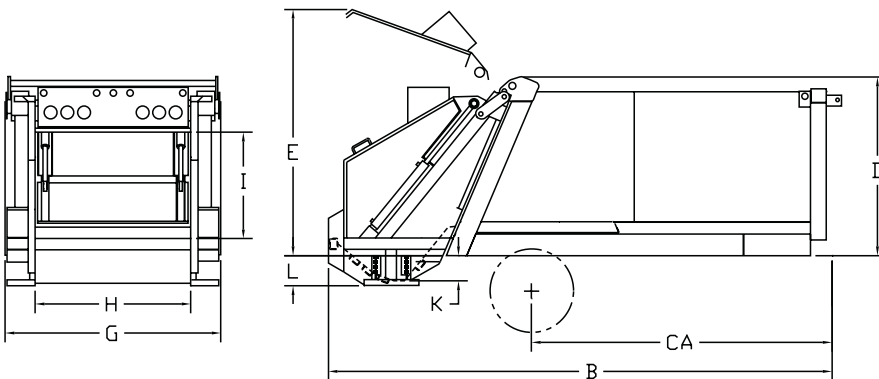
Choose from a full array of available cart tippers



Low loading height



Efficiently collect any rural route



BODY SPECIFICATIONS

	SPR6	SPR8
Advertised Body Size	6 cu. yd.	8 cu. yd.
B: Overall Length	157"	181"
CA: To Centerline of Rear Axle	84"	108"
D: Height Above Chassis Frame	64"	64"
E: Height Above Chassis Frame – Tailgate Raised	103"	103"
F: Body — Outside Width	78"	78"
G: Hopper Opening Width	56"	56"
H: Hopper Opening Height	45"	45"
I: Hopper Depth	13"	13"
J: Hopper Bottom Below Chassis Frame	11"	11"
K: Top of Step Below Chassis Frame	adjustable	
L: Loading Sill Above Chassis Frame	6"	6"
Dynamic Hopper Capacity (cu. yd./min)	4.2 cu. yd.	4.2 cu. yd.
Hopper Capacity	1 cu. yd.	1 cu. yd.
Center of Gravity Measured From Front of Body		
• Body Only	79"	64"
• Pay Load	69"	52"
Approx. Body Weight	4,750 lbs.	5,050 lbs.
Truck GVWR Recommended	14,250 lbs.	16,000 lbs.

Features

- Extra-fast 10 to 14 second packing cycle
- Strong, curved floor I-beam construction
- High-strength, curved shell body design
- Lightweight, high strength-to-weight ratio
- Proven, worldwide performance
- Low loading height
- Narrow 78" width (under 2 meters)
- Automatic latching tailgate
- ANSI and CE certified, CDL & FET exempt

Hydraulic System

Cylinders:

- (2) 2.5" double-acting packer panel cylinders
- (2) 2.5" double-acting slide panel cylinders
- (1) 4.5" double-acting, telescopic ejection cylinder
- (2) 2.5" single-acting tailgate lift cylinders

Pump — Gear Type:

- Capacity — 17 GPM @ 1,300 RPM
- Maximum operating pressure — 2,500 PSI

Hydraulic Tank:

- Capacity — 20 gal.
- Location — Right-hand front on floor inside body
- Sight Gauge — on tank
- Filter — 10 micron return line filter with by-pass valve

Body Construction

- Sides — 11 gauge 50,000 PSI
- Top — 11 gauge 50,000 PSI
- Floor — 11 gauge 50,000 PSI

Tailgate Construction

- Hopper sides — 8 gauge 50,000 PSI
- Hopper bottom — 3/16" AR400 177,000 PSI
- Slide panels — 3/16" 50,000 PSI
- Sweep panel — 3/16" AR400 177,000 PSI

Optional Equipment

- Strobe light
- 4,000 lb. overhead drum winch with tailgate flare
- Cart tipper — semi-automated carts
- Cart tipper — automated carts
- Side access door
- Work lights
- Rotating beacon

WAYNE[®]
ENGINEERED FOR PERFORMANCE

701 Performance Drive, Cedar Falls, IA 50613
Phone: (319) 266-1721 • Fax: (319) 266-8207

Tollfree: 888-66WAYNE
www.WayneUSA.com